



Interreg



Co-funded by
the European Union

Estonia – Latvia

EE-LV00143 RIVERWAYS II

**Alise Lūse
Project Leader**



**KURZEMES
PLĀNOŠANAS
REĢIONS**

Kick-off meeting



Project team



LV

Kurzeme, Riga, Vidzeme planning regions

Municipalities:

DKN, Liepaja, Kuldiga

Jurmala, Kekava, Adazi

Valmiera, Madona, Valka, Limbazi

EE

Tartu University Parnu college

SEDMO

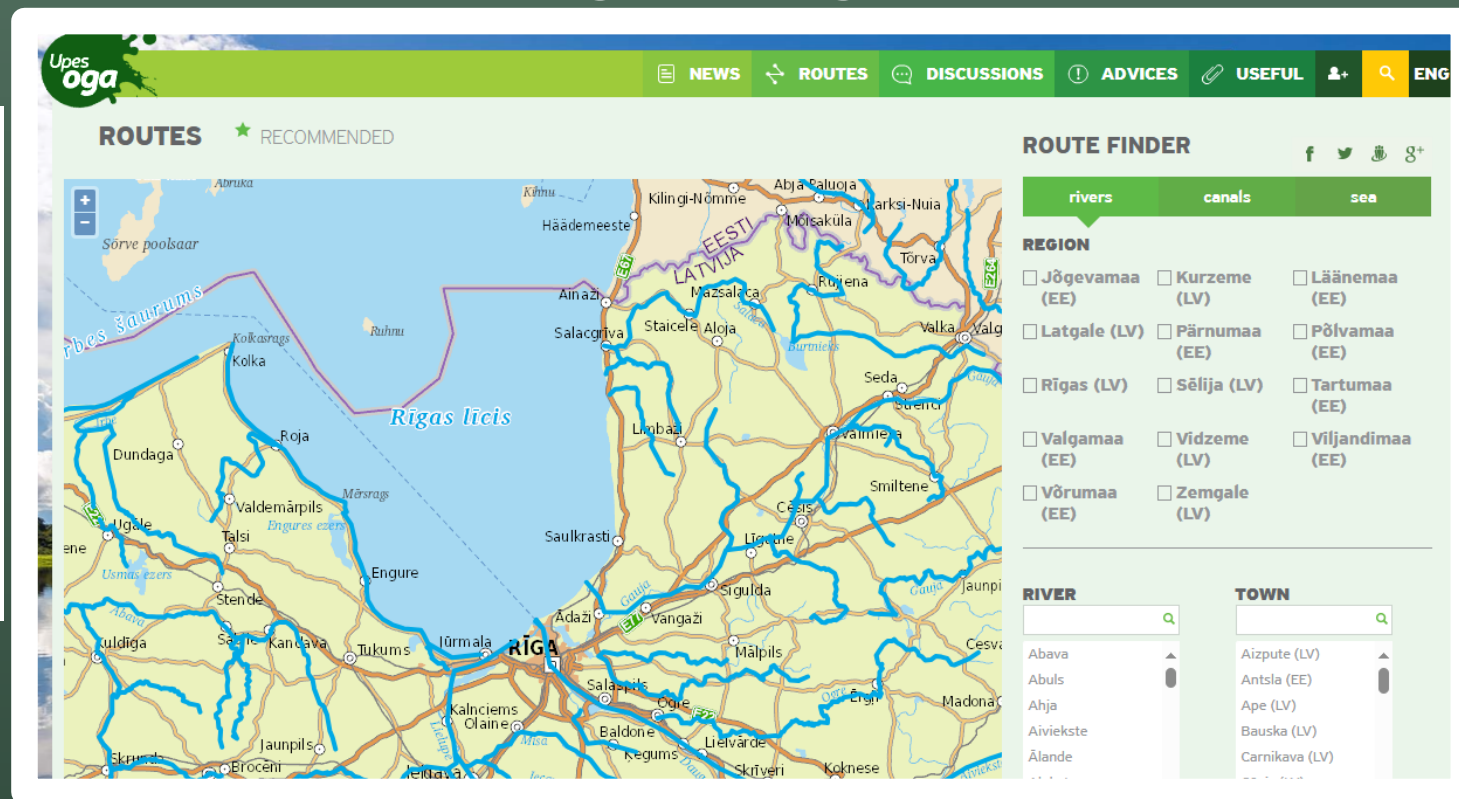
GRP

Municipalities:

Otepaa, Luunja, Antsla, Setomaa, Voru

RIVERWAYS (1st project)

- Implemented over 2013-2015
- Watertourism routes created in LV and EE www.riverways.eu | www.upesoga.lv | www.seikleveel.ee
- Improved infrastructure along rivers (river cleaning, resting areas)



Interreg



Co-funded by the European Union

Latvia – Lithuania



LL-00011

WaterWays

Development of the water routes network in Latvia and Lithuania by further expanding the cross-border tourism product www.riverways.eu

Project objective is to develop the waterways network in Latvia and Lithuania by further expanding existing cross-border tourism product riverways.eu through designing of a network of lakes for recreational activities and rivers for kayaking.

- Website www.riverways.eu improvement with water tourism based activities in lakes and rivers;
- "Safe&Green" concept to facilitate safe and nature friendly tourism;
- Experience Exchange visits and Workshops;
- Travel guide and map «Recreational lakes», media tours and publicity campaigns;
- 6 recreational sites near waters will be developed, contributing to the accessible nature resources for water-based activities.

Duration: **March, 2024 – February, 2026**

Project budget: **719 581 EUR**
Co-financed by the European Regional Development Fund: **575 664 EUR**

www.latlit.eu

This project is co-funded by the Interreg VI-A Latvia-Lithuania Programme 2021–2027



2024-2026 Lat-Lit

WaterWays

RIVERWAYS II key activities

WP1 Waterfront access

- Pilot actions to improve access to waters (safe docking, boating, swimming, fishing sites etc.) – 16 sites selected
- Survey, inspection, marking of accessibility of public recreational waters
- riverways.eu and mapeirons.eu upgrade

WP2 Accessible watertourism products

- Hackathon in Vidzeme
- Study visit to Finland
- Training of watertourism operators – how to serve people with disabilities, seniors, families

RIVERWAYS II key activities

WP3 Marketing

4 large-scale watersports events

4 mini events with involvement of target groups in safe watertourism activities

Travel Guide on accessible watertourism

5 local events with Green&Safe concept

4 digital campaigns

Boating site



Canoe



[\(1\) Harbor Yak - Did you know? 🤔 Our kayak launch makes getting in... | Facebook](#)



Canoe



Canoe









**Swimming
site**

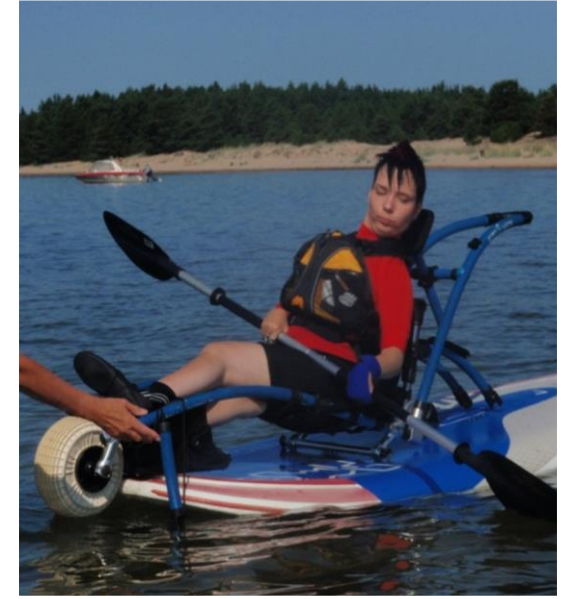
Fishing sites

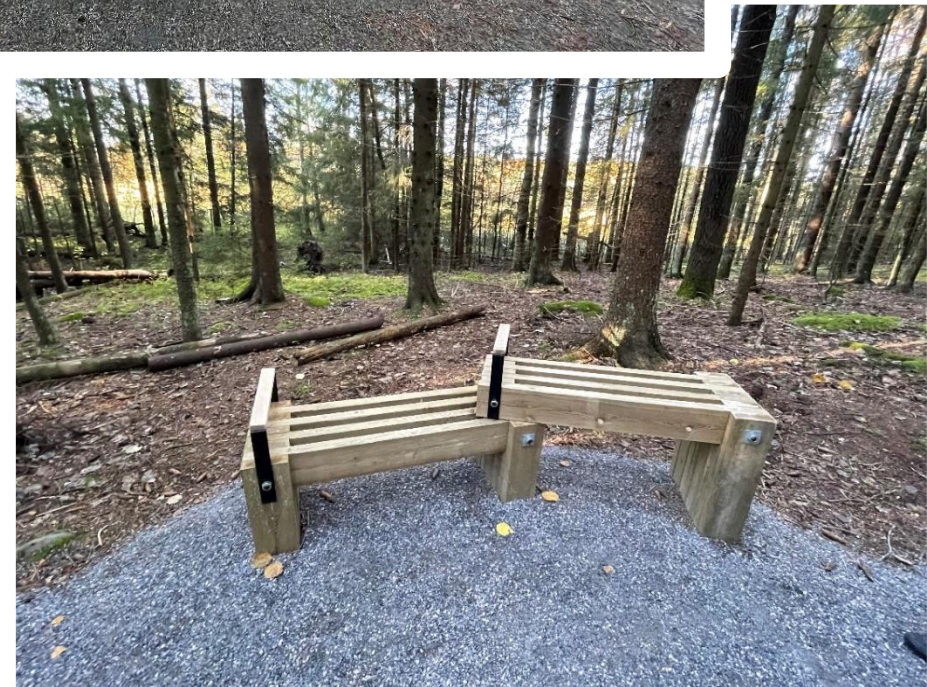


Simple & efficient



Simple & efficient





**Resting
area**

Complex access sequence



Accessibility guidelines

TŪRISMA INFRASTRUKTŪRAS, PRODUKTU UN PAKALPOJUMU PIELĀGOŠANA CILVĒKIEM AR ĪPAŠĀM VAJADZĪBĀM

4 TAKA

Kāpnes

Pakāpieniem jābūt ar vienādu augstumu un platumu, nav vēlams veidot grieztas, vītņveida kāpnes. Projektējot kāpnes, nepieciešams ievērot vidējā soļa formulu - $b+2a$ ir jābūt aptuveni vienādam ar 650 mm, kur b - pakāpiena platums un a - pakāpiena augstums. Katram kāpņu laidam nepieciešams marķēt pirmo un pēdējo pakāpienu ar kontrastējošu (tumšs uz gaiša) krāsu. Kāpņu margām jāseko kāpņu formai, un tām jābūt 300 mm pirms un jābeidzas 300 mm pēc kāpnēm. Vietās, kur ir kāpnes, jānodrošina spilgtāks apgaismojums nekā pārējā teritorijā. Vēlamais apgaismojums šādās vietās ir 75 luksi.

Samaiņšanās vieta

Laipas minimālais platums ir 1200 mm, taču pārskatāmā attālumā (30-50 m) nepieciešams ierīkot 2000 mm garu un 1800 mm platu samaiņšanās vietu. Ja laipa ir pacelta, samaiņšanās vietās tā jāapriko ar 50 mm augstām apmalēm. Apmales vēlamas visā laipas garumā.

Panduss/ slīpne

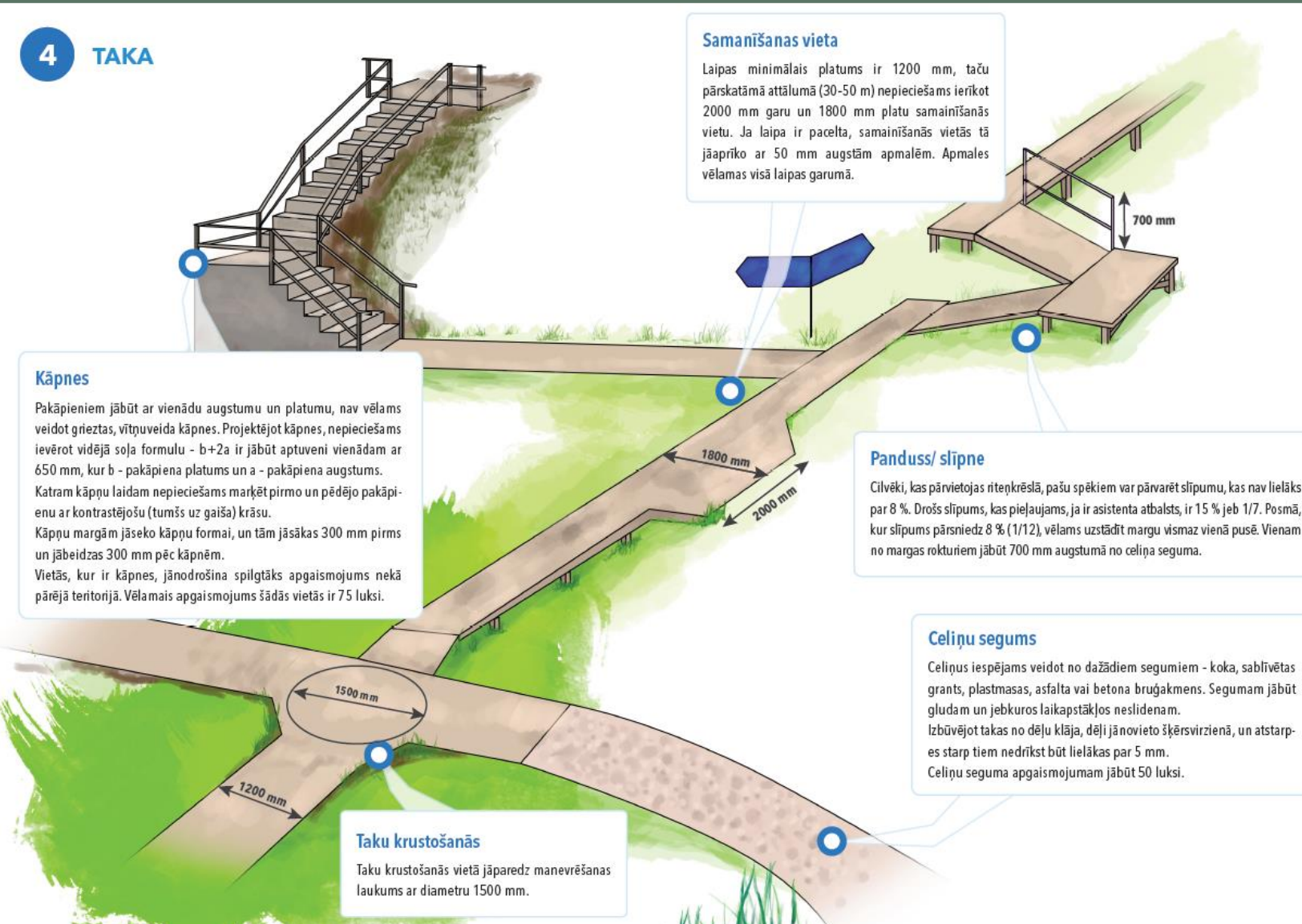
Cilvēki, kas pārvietojas riteņkrēsļā, pašu spēkiem var pārvarēt slīpumu, kas nav lielāks par 8%. Drošs slīpums, kas pieļaujams, ja ir asistenta atbalsts, ir 15% jeb 1/7. Posmā, kur slīpums pārsniedz 8% (1/12), vēlam uzstādīt margu vismaz vienā pusē. Vienam no margas rokturiem jābūt 700 mm augstumā no celiņa seguma.

Celiņu segums

Celiņus iespējams veidot no dažādiem segumiem - koka, sablīvētas grants, plastmasas, asfalta vai betona bruģakmens. Segumam jābūt gludam un jebkuros laikapstākļos neslidenam. Izbūvējot takas no dēļu klāja, dēji jānovieto šķērsvirzienā, un atstarpes starp tiem nedrīkst būt lielākas par 5 mm. Celiņu seguma apgaismojumam jābūt 50 luksi.

Taku krustošanās

Taku krustošanās vietā jāparedz manevrēšanas laukums ar diametru 1500 mm.



7 blocks

Path and resting area

Parking lot

Toilet

Info and signs

Stirs

Watching platform

Fishing/boating site

Accessibility check-list for nature trails

mapeirons.eu

This accessibility check-list for nature trails has been produced with the financial assistance of the Central Baltic Programme 2014 – 2020 as part of the Project No CB786 "Nature Access to All" (NatAc).

The project aims at facilitating access to nature tourism by developing the chain of accessible nature tourism sites in the core Central Baltic area in Latvia, Estonia and Finland. The project is being implemented by the Kurzeme Planning Region in cooperation with NGO West-Estonia Tourism, Estonian Environmental Board, Pärnu City Government and Parks & Wildlife Finland (Metsähallitus).

The contents of this brochure are the sole responsibility of West-Estonia Tourism and can under no circumstances be regarded as reflecting the position of the European Union.

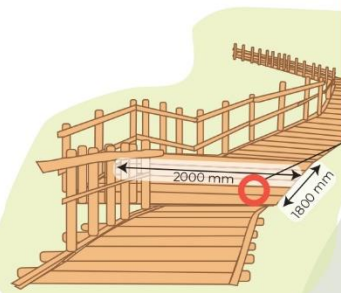
Publisher: NGO West-Estonia Tourism, 2021



Nature trail and resting area

*Questions highlighted in bold are mandatory to be answered "yes" for a trail to meet the minimum accessibility criteria

- Are there exchange areas in every 40 m, in case the boardwalk/trail is narrower than 1600 mm in Estonia and 1800 mm in Latvia and Finland (but not narrower than 1200 mm)?
- Is the boardwalk exchange area at least 1800 mm wide and 2000 mm long?



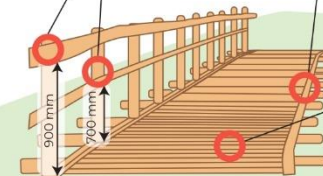
- Is there an accessible toilet available near the trail? (see section Toilet)



- Is there a parking lot near the trail? (see section Parking lot)



- Are there handrails on at least one side of the ramp in at least two heights – 700 mm and 900 mm?



- Is there a 50 mm border along the entire length on both sides of the boardwalk?

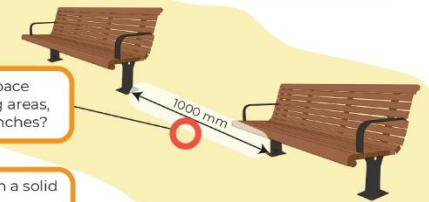
- Is the boardwalk/trail at least 1600 mm wide in Estonia and 1800 mm wide in Latvia and Finland?
- Is the trail surface dense and flat and non-slippery? (weather conditions have to be taken into account, e.g. heavy rain)
- Are boardwalk planks situated perpendicularly to the direction of movement?
- Is the space between planks not more than 10 mm wide?

- Is the trail crossfall less than 1:33 (3%)? (i.e. slope perpendicular to the direction of movement)



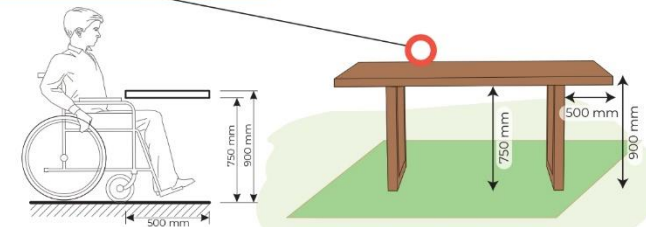
- Are there resting areas available at sites where trail rise reaches 1:20 (5%) and 1:12 (8%), at least in every 6 m or at least one resting area for a 10 m long rise?

- Is there a bench available in every 300 m of the trail? Is there a handle placed at least on one side of the bench?



- Is there at least 1000 mm space between benches at resting areas, which are installed with benches?

- Are picnic tables situated on a solid and flat surface?
- Is there a 750 mm high and 500 mm deep free space below the table?
- Is the table surface not higher than 900 mm from the ground?



Cooperation & assistance in testing



Meetings

- LP – hosting 2 PMMs
- VPR – hosting 2 PMMs
- RPR – hosting 1 PMM
- SEDMO – hosting 2 PMMs
- GRP – hosting 2 PMMs
- Setomaa – hosting 1 PMM

01.09.24.-31.12.24.

01.05.27.-31.08.27.

Project periods 1-9 (01.09.24.-31.08.27. 36 months)

Reporting

Checked by FC
> 3 months

Partners
reports

- **Partner Reports 1 – 9**
10 working days after the end of the reporting period
- **Project Reports 1 – 9**
10 working days after last confirmations on partner reports
- **Final report**
together with progress report 9

Checked by JS

Progress
reports (LP)

*10% flexibility of a cost category at the level of the total project budget

Partner report in LV checked by MoEPRD, in EE – by State Shared Service Centre

Payments



① ERDF payment by MA to Lead Partner

② ERDF payment by LP to Partners (~ 6 months after the end of the period)

Starting with Period 2, when all Partner reports submitted, 50% advance can be requested

Period 1 (September – December)

Procurement of accessibility expertise services:

- Kurzeme, Vidzeme, Riga region for LV partners**
- TU Parnu College for EE partners**

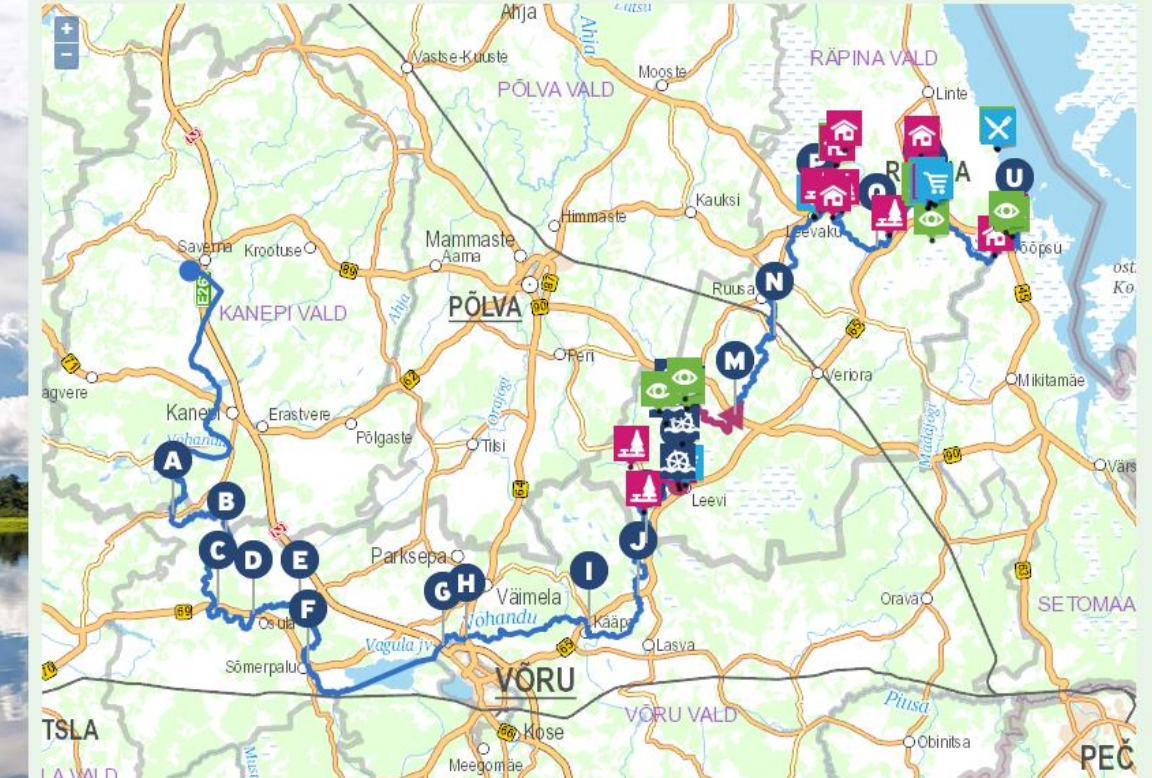
A1.2 Survey & inspection of recreational waters' accessibility:

- *inspection form in cooperation with LL-00011 WaterWays***
- *Upload on mapeirons.eu & riverways.eu***

3) To develop a CL on cultural heritage sites & services and carry out inspections in Kurzeme, Vidzeme and South-Estonia (min 30)

4) Hackathon – 02.25

5) Study visit to Finland – 05.25



Estonia | Võrumaa, Põlvamaa | Võru, Rõpina, Põlva, Antsla | Võhandu



Description Routes Places Operators

riverways.eu
mapeirons.eu

Search object Location Object type Accessibility Activity type

- Total 1026 places
- Pävilosta Beach Boardwalk**
Watch the trail video: Description: Pävilosta beach boardwalk stretches along the widest gray dune in...
Learn more...
 - Pävilosta Pier Promenade**
Watch the trail video: Description: Pävilosta pier promenade was opened very recently – in 2020....
Learn more...
 - Paths at Dvāseles Veldzes Dārzs**
Listen to trail audio Share audio Share audio Facebook Twitter Whatsapp Description: Līspāja Society of...
Learn more...
- 1 2 3 4 ... 103 >



Publicity



RIVERWAYS II

- 1) Poster
- 2) Website section
- 3) FB, Instagram etc.
- 4) Tags #Interreg #est-lat #riverways

Interreg  Co-funded by
the European Union
Estonia – Latvia

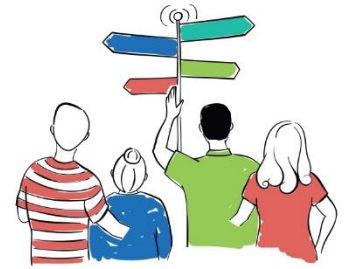
Objective:

Facilitate water tourism in Latvia and Estonia by expanding cross-border tourism product www.riverways.eu and



**ESTONIA-LATVIA
PROGRAMME
2021-2027**

Growing through neighbourly cooperation



RIVERWAYS II

Project aims to facilitate watertourism in Latvia and Estonia by expanding the website www.riverways.eu and developing innovative solutions to access and use recreational waters, routes and products by all target groups (incl. disabled, seniors, families with children etc.)

Duration

09/2024 - 08/2027

Financed by the
European Regional
Development Fund:

1 200 000,00 €

Co-financed by
the partners:

300 000,00 €



estlat.eu

Interreg



Co-funded by
the European Union

Estonia – Latvia

A photograph of a person in a wheelchair sitting on a wooden boardwalk. The person is wearing a light grey hoodie and is looking out over a large body of water, likely a lake or bay, under a blue sky with scattered clouds. The boardwalk has a wooden railing on the right side. The background shows some greenery and a distant shoreline.

Thank you 😊

alise.luse@kurzemesregions.lv

+371 26567874