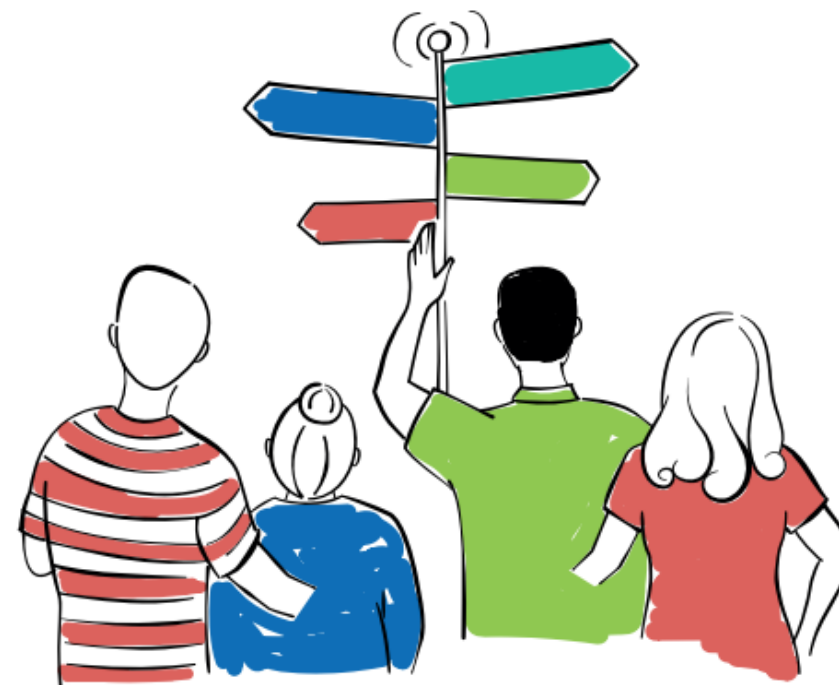




# ESTONIA-LATVIA PROGRAMME 2021-2027

Growing through neighbourly cooperation



## LUUNJA MUNICIPALITY

“Creating additional opportunities for the Emajõgi in the port of Luunja”

Interreg



Co-funded by  
the European Union

Estonia – Latvia

# Introduction of Luunja municipality

Luunja Parish is a rapidly developing municipality located in the eastern part of Tartu County.

Situated on the northern bank of the Emajõgi River, the parish stretches from the city of Tartu to the vast wetlands of the Emajõgi.

It is a highly diverse area, encompassing both modern residential neighborhoods and untouched natural landscapes.

We have the fastest-growing population in Southern Estonia, as the excellent living environment attracts more and more young families to the area.



## **Current situation and accessibility problems**

The river Emajõgi is suitable for swimming, boating, fishing, but there is no leisure opportunities available for people with functional disabilities.

The shore area of river Emajõgi is with a unique area of nature, so far only one part of the community could be used for recreational activities, because there is no year-round access.

## Key activities

- providing access to fishing and resting activities for all (construction of accessible enclosed platforms and access path according to universal design principles);
- providing access to beach area for all (choosing best access modes);
- installation of a tactile information stand.