

Interreg



Co-funded by
the European Union

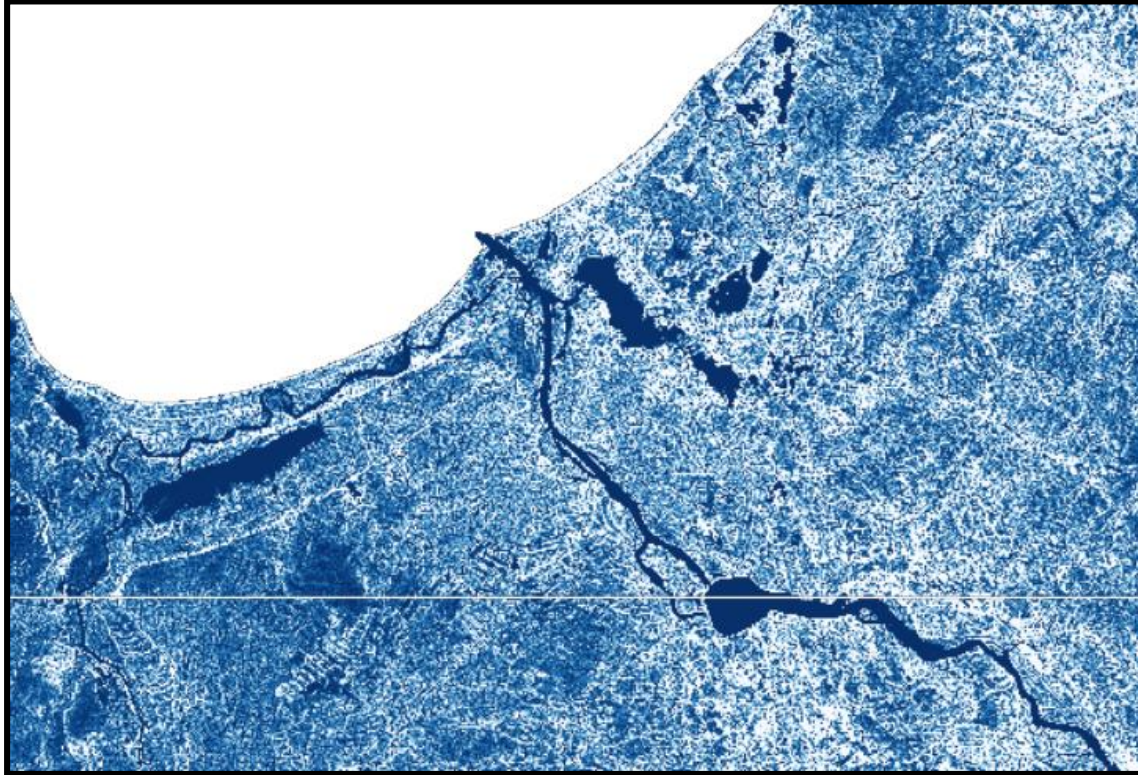


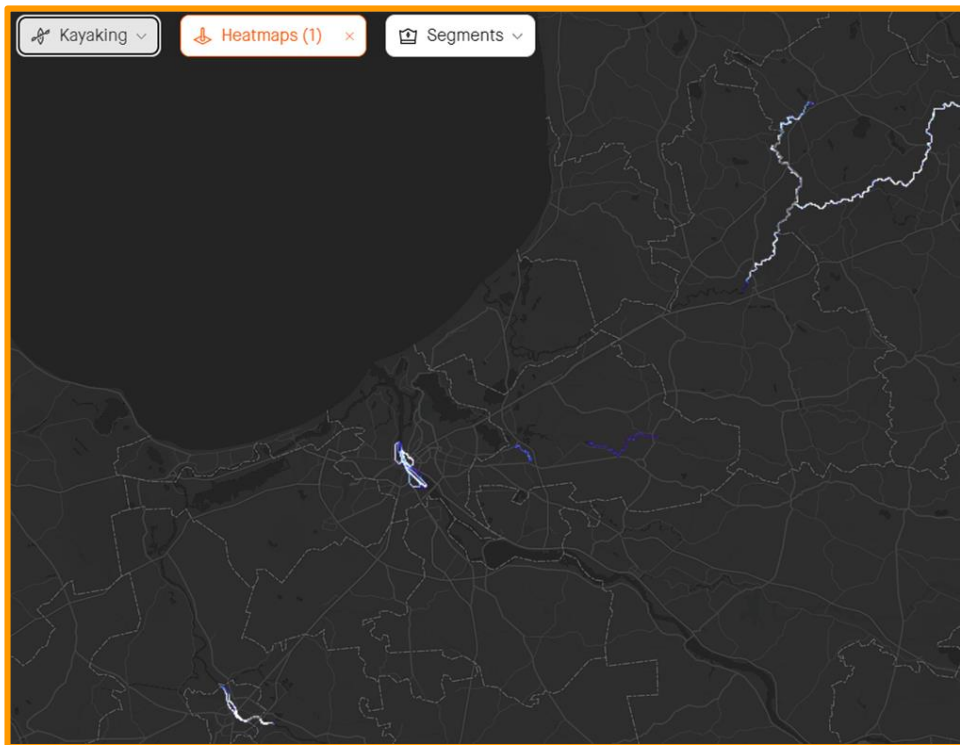
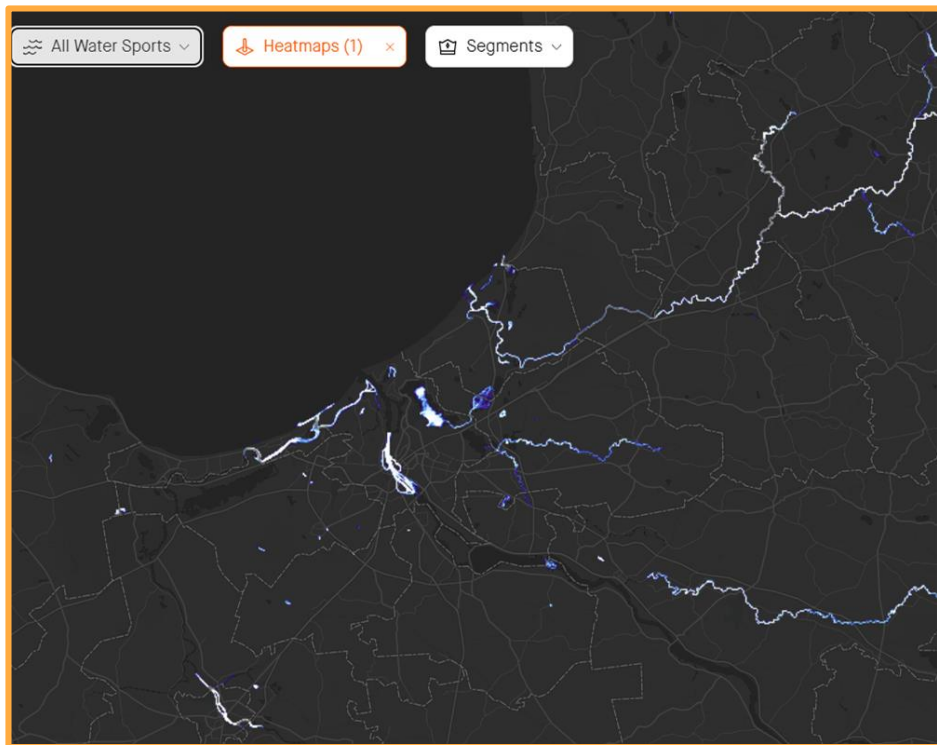
RĪGAS
PLĀNOŠANAS
REĢIONS

Estonia – Latvia

Riverways II / Upesceļi II

Riga planning region (Riga metropolitan area)





Riga planning region (RPR) role in the project

- RPR will actively participate in most project activities.

As part of WP1:

- RPR will conduct an **inspection of the acesibility of water tourism resources** in the Pieriga region. In addition, RPR will participate in coastal accessibility testing and solution search, and review and expand websites for www.riverways.eu and www.mapeirons.eu places and water routes in the Pieriga region;
- RPR will coordinate the **acesibility expertise for investment sites** in the Pieriga Region through a joint financing services agreement (shared costs with Kurzeme PR and Vidzeme PR, SATT).

Riga planning region (RPR) role in the project

As part of WP2 RPR will participate in:

- exchange visits,
- participate in development of training materials and
- will be responsible for organizing training of water tourism service providers in the Pierīga region.

Riga planning region (RPR) role in the project

As part of WP3:

- RPR is responsible for organizing a PROMO FAM trip in the Pierīga region and for contributing to the content of the Tourism Roadmap on available water tourism for Pierīga Region's water tourism sites and routes, and will participate in the development and printing of the Roadmap through a shared costs agreement (shared costs with KPR, VPR, SATT).
- RPR will organize at least one project partners meeting.

RPR contacts:

Laura Bite,
Project coordinator
Laura.bite@rpr.gov.lv
t. 29669289

Edgars Ražinskis,
Project expert
Edgars.razinskis@rpr.gov.lv
t. 28664983



RĪGAS
PLĀNOŠANAS
REĢIONS

Thank you for your attention!
Paldies par uzmanību!