



Interreg



Co-funded by
the European Union

Estonia – Latvia

EE-LV00143 RIVERWAYS II

**Alise Lūse
Project Leader**



**KURZEMES
PLĀNOŠANAS
REĢIONS**

PMM meeting 15.07.25

Today's topics

(13:00 – 17:00)

- **1) Presentations by each of the partners:**
 - on investment activities so far, incl. presentation of pier sketches
 - overview on desk-search of lakes in each partners' area
 - changes needed for rivers' data published on riverways.eu
 - activities for Period 3 & 4
- 2) Presentation by Regional partners (KPR, RPR, VPR UR, GRP) on accessibility inspections carried out so far + key findings + upcoming schedule**
- 3) Presentation by VPR and UT on the schedule of watertourism operators' training material, incl. main topics**
- 4) Discussions on project large-scale watertourism & Green&Safe concept local events**

- Status with 2nd partner reports & modifications

- Project modifications: none in Period 2

Partner reports, all approved, last approval for Setomaa on 11.07:

0-cost report: DKN, Liepāja, Kuldīga, Ķekava, Ādaži, Valmiera, Madona, Valka, Limbaži, Otepää, Luunja, Antsla

Reports with costs: KPR, RPR, VPR, UT, SATT, GRP, Jūrmala, Setomaa, Voru



- Investments – pier sketches

Accessibility
guidelines
mapeirons.eu

Accessibility
experts

LP

Boating/fishing site

**see points on limits for surface, steepness, gaps and obstacles of landing site, pier and connection bridge under Nature trail and resting area section*

Boating/kayaking/canoeing site

- Is it possible to land sideways and lengthways?
- Is there an accessible mooring site for a boat/kayak/canoe on the shore?
- Is there an accessible scaffold for entering the boat/kayak/canoe?

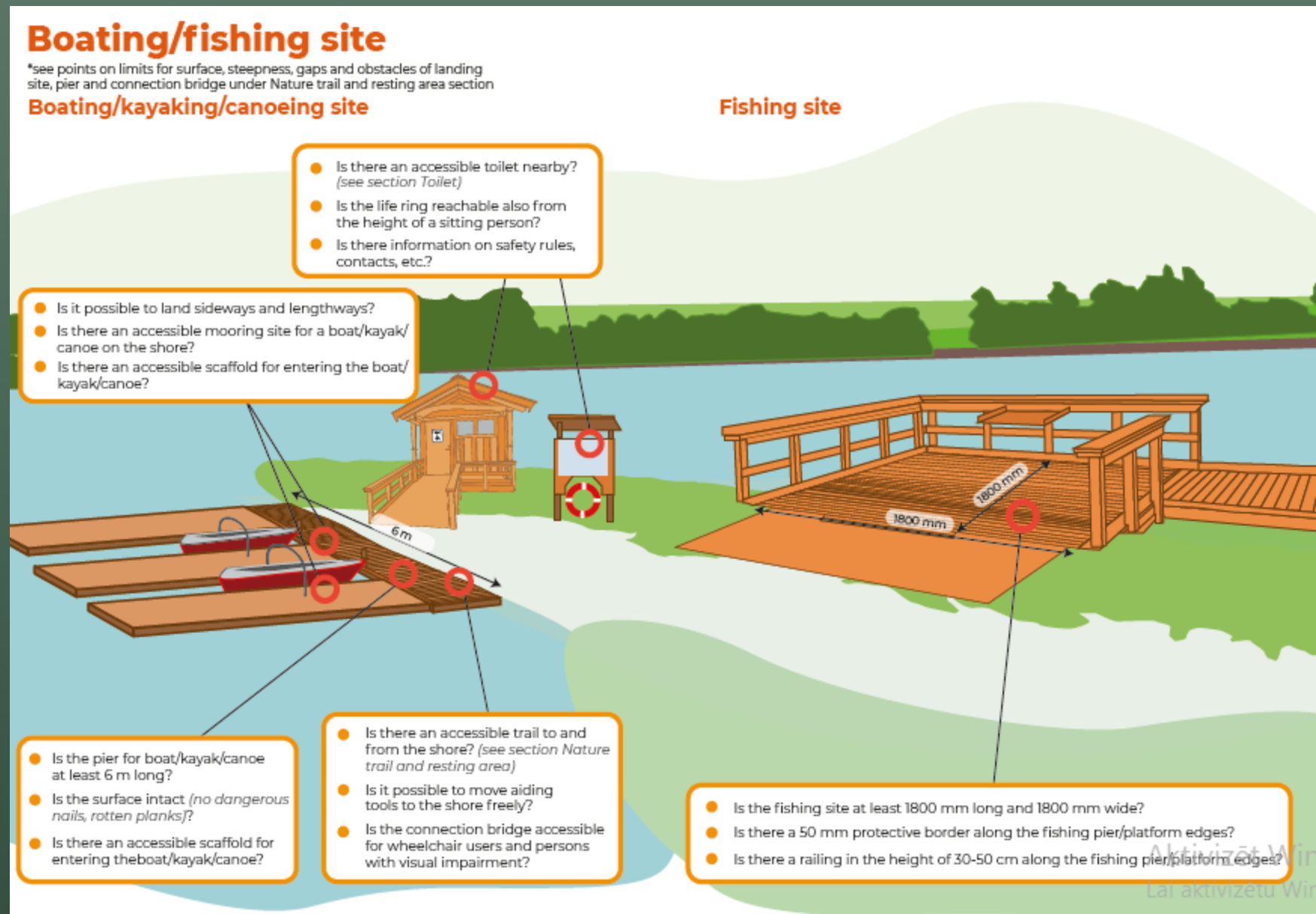
- Is there an accessible toilet nearby? (see section Toilet)
- Is the life ring reachable also from the height of a sitting person?
- Is there information on safety rules, contacts, etc.?

- Is the pier for boat/kayak/canoe at least 6 m long?
- Is the surface intact (no dangerous nails, rotten planks)?
- Is there an accessible scaffold for entering the boat/kayak/canoe?

- Is there an accessible trail to and from the shore? (see section Nature trail and resting area)
- Is it possible to move aiding tools to the shore freely?
- Is the connection bridge accessible for wheelchair users and persons with visual impairment?

Fishing site

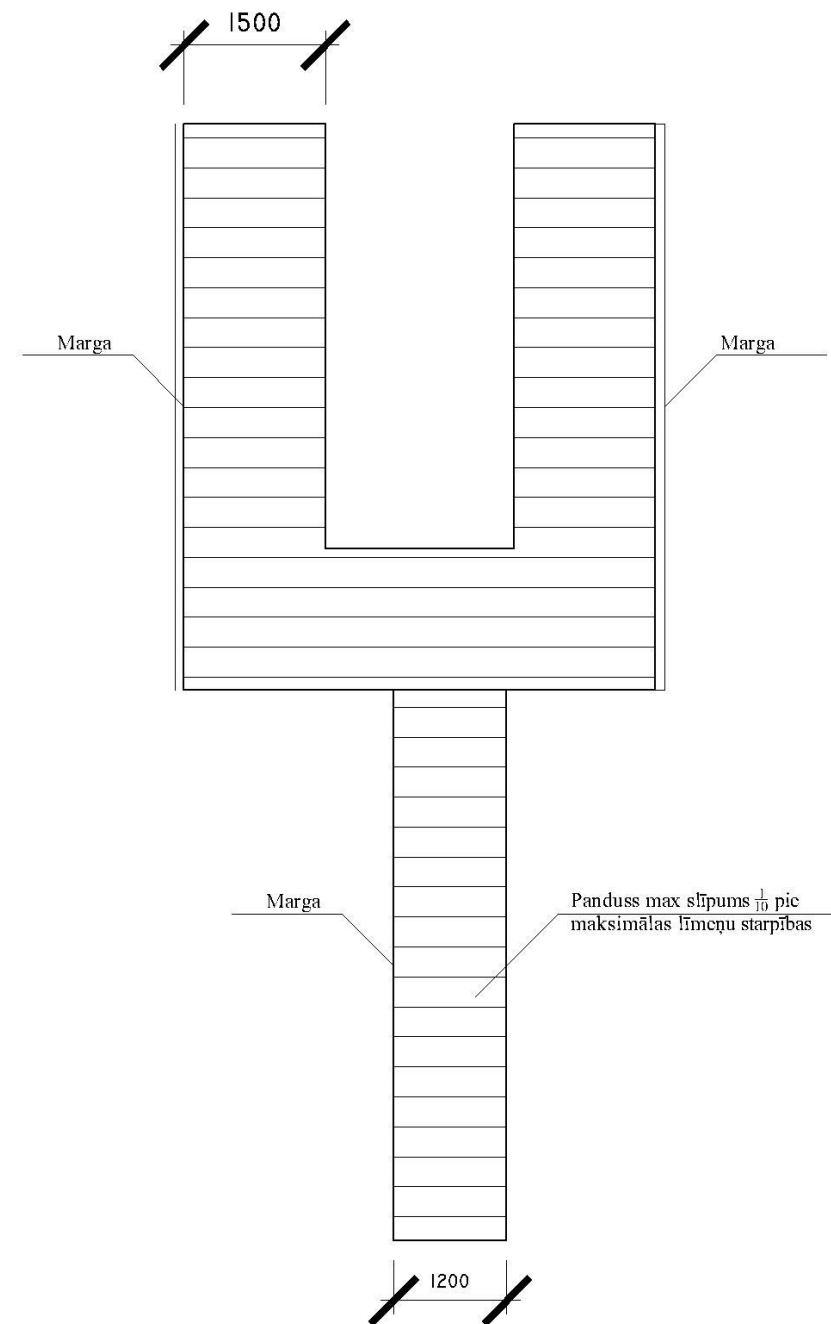
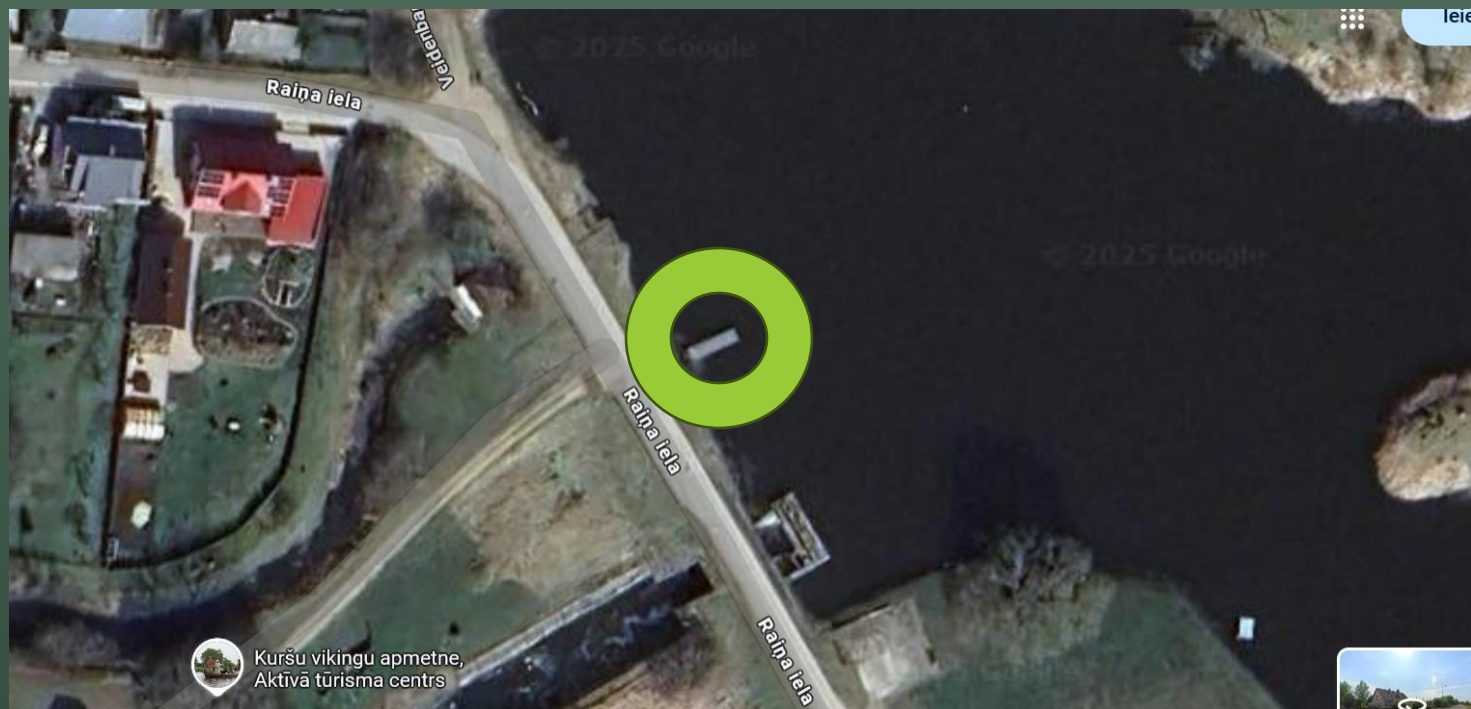
- Is the fishing site at least 1800 mm long and 1800 mm wide?
- Is there a 50 mm protective border along the fishing pier/platform edges?
- Is there a railing in the height of 30-50 cm along the fishing pier/platform edges?



Inspections by KPR

Pier on the Ālande River coast

- Adaptation of 2 Curonian viking boats
- Audio guide with portable sound system
- Tactile stand



Interreg



Co-funded by
the European Union

Estonia – Latvia

Invalidu un viņu draugu apvienība

“APERONS”



KURZEMES
PLĀNOŠANAS
REĢIONS

Izpildītājs

NVO Apeirons, Riverways II projekta

Vides pieejamības eksperts Jurgis Briedis

E-pasts: jurgis@apeirons.lv

Tel.: +371 26 353 728

Ieteikumi

Objekts: Grobiņa, Ālandes upe (investīciju vieta Riverways II projekta ietvaros)

1. Grobiņas

1.1 Situācijas apraksts

Grobiņa, pie Raiņa ielas pieguļošās ūdenstīlpnes plānots uzstādīt pontonu iekāpšanai laiva, kas paredzēts piemērots cilvēkiem ar kustību traucējumiem.



1.2 Autostāvvietā

Pie ūdenstīlpnes ir autostāvvietas, taču nav iezīmēta neviena stāvvietā cilvēkiem ar invaliditāti. Esošajā situācijā nepieciešam iezīmēt stāvvietu cilvēkiem ar invaliditāti ar atbilstošu vertikālo apzīmējumu un papildzīmi.



1.3 Piekļuve ūdenstīlpnei

Ūdenstīlpne atrodas tiešā ceļa tuvumā, līdz ar to uzbraukšana uz laipas sāksies pie paša ceļa un papildus uzlabojumi, celiņa veidošana, nav nepieciešama.



1.4 Laivu piestātne

Veidojot laivu piestātni ar pontoniem, jāparedz iespēju iekāpt laivā samazinot iespēju iekrist ūdenī vai kā citādi pakrist. Jāpatur prātā, ka risinājumam jābūt pēc iespējas universālākam, tas nozīmē, ka lielākā daļa lietotāju ar kustību traucējumiem nepārvietosies ratīņkrēslā.

Viena no iespējām ir veidot pontonā kabatu, kur var iebraukt ar laivu, piefiksēt to no divām pusēm. Pārī šai kabatai tiek uzstādīts atbalsta rokturis, kas palīdz arī cilvēkiem ar līdzsvara traucējumiem iekāpt laivā.

Lai atvieglotu iekāpšanu laivā cilvēkiem, kas pārvietojas ratīņkrēslā, var domāt par pagriežama krēsla uzstādīšanu uz pontona. Tas nozīmē, ka cilvēks pārsēžas no ratīņkrēsla uz krēslu, kas atrodas virs pontona klāja, kad cilvēks ir pārsēdies, asistents šo krēslu pagriež virs laivas, līdz ar to cilvēku ir vieglāk un drošāk iesēdināt laivā.

Piemērs laivu piestātnei

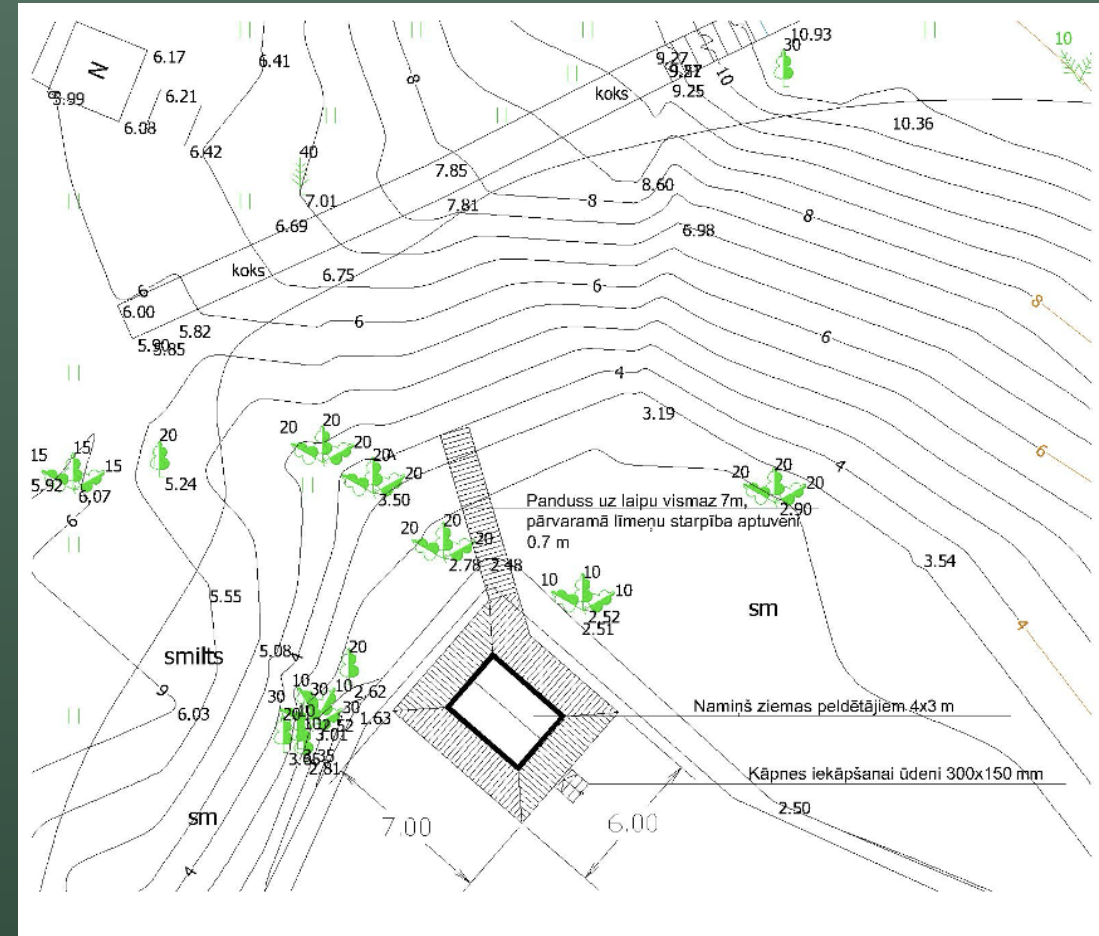
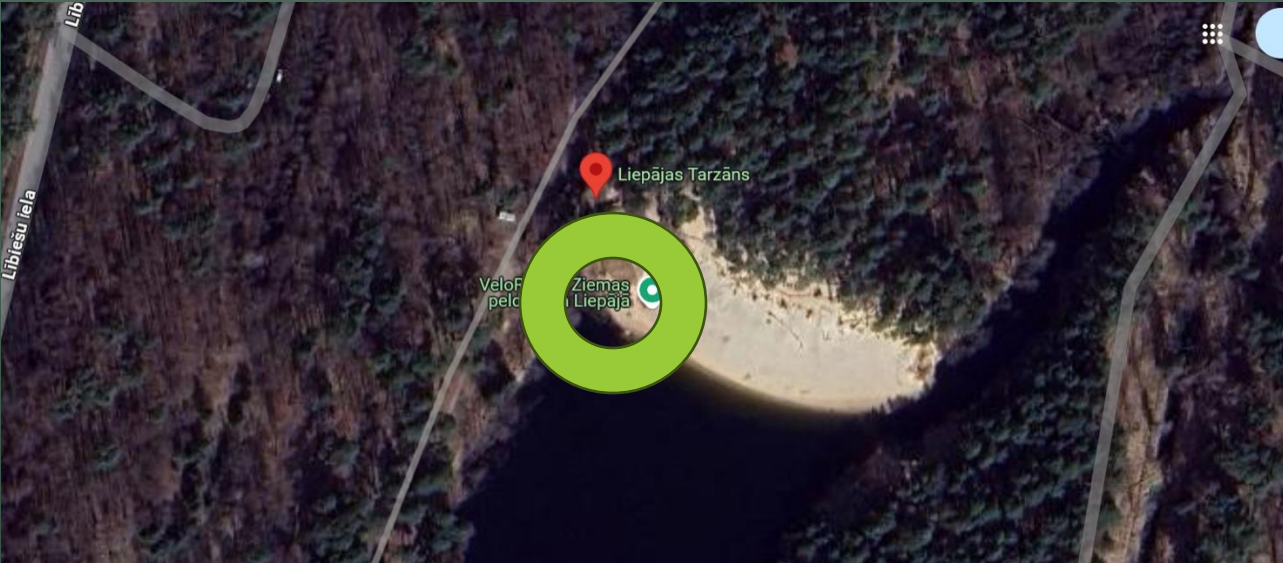


Iekāpšanas platformai vismaz vienā pusē jāparedz ne mazāku kā 1500 mm platu zonu. Pontonam jāparedz marga gar manevrēšanas zonas ārējo malu.

Inspections by KPR

More accessible winter swimming site at Beberliņi waterbody

- Floating hut on a pontoon (to change and safely get into the water)
 - Ramp
 - Improvement of path to get to the ramp
-

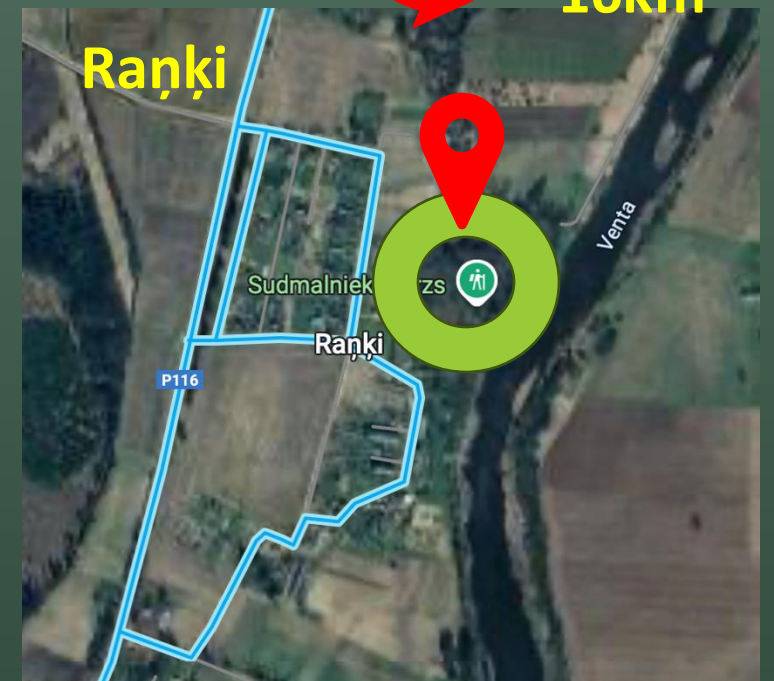




Still to inspect: Kuldīga

2 piers on the Venta River coast

- one multifunctional pier in Skrunda
- The second – a smaller one, in Raņķi
- Accessibility improvements at resting areas at both piers
- Accessible, 16km long boating route



Inspections by KPR – other sites

2) Other sites in the region:

in coordination with

Access Routes & WaterWays



**create a shared Google file on
inspected sites**



**upload info on riverways.eu
and mapeirons.eu**



responsible persons?

Period 5: 3 (Kurzeme)+5 (Pieriga)

Liedagi beach

Apšuciems beach

Pape beach

Riga & Pieriga

Jurmala Open-air museum

Dzintari beach

Vaivari beach

Jaunkemberi beach (2)

Riga Panoramic wheel

Period 6: 3 + 2

Engure beach

WC (Engure centre)

Kesteriems beach

Riga & Pieriga

Getlini waste landfill

Kauguri beach (2)

Find the best spots for your free time activities!

✕ Clear parameters

Search object



Location

Beach

Accessibility

Activity type

Total 27 places



Liedagi Beach

A short, but really pleasant walk up to the seaside with stylish resting benches in...

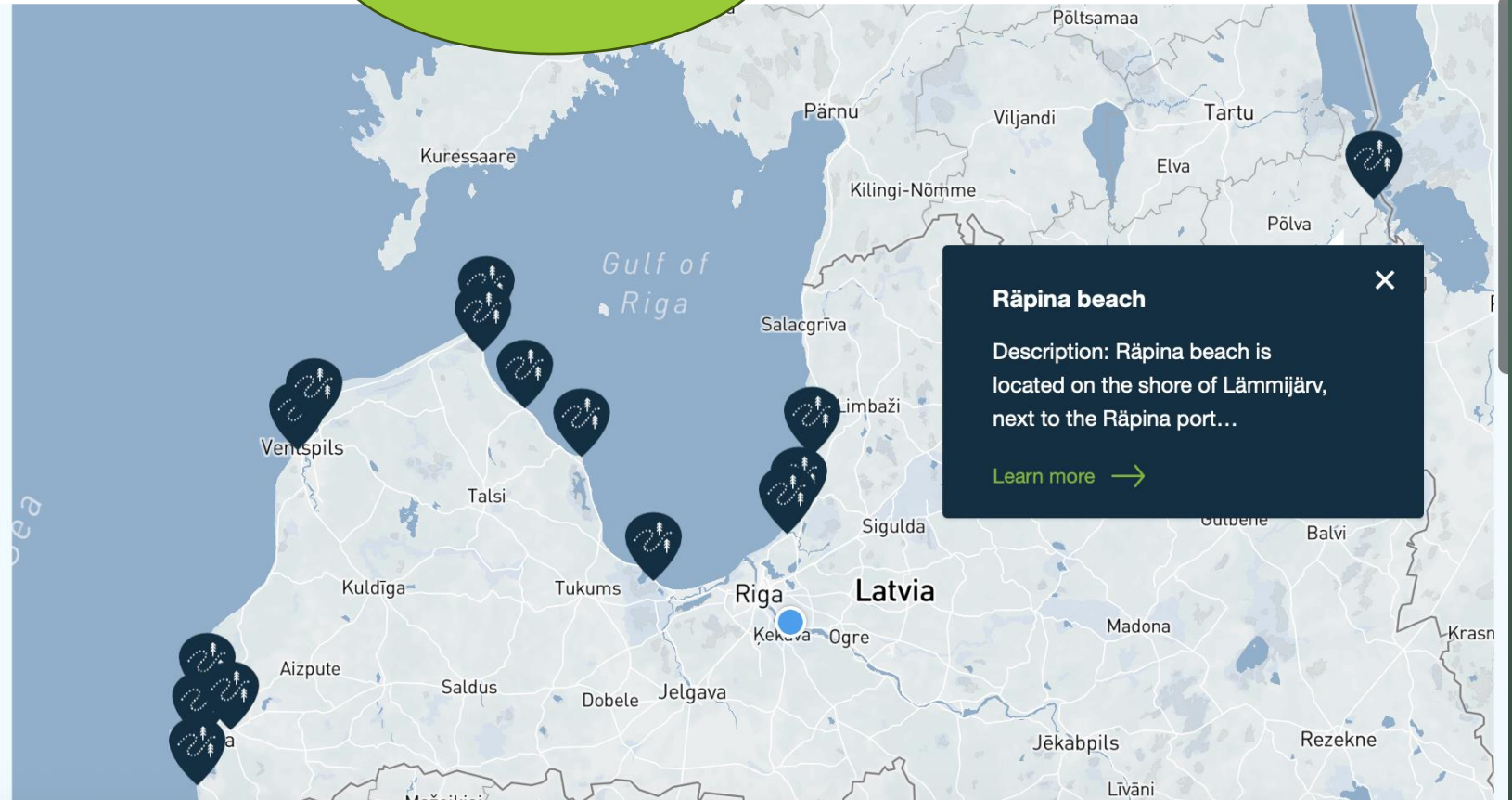
[Learn more...](#)



Dzintari Beach

Easily reachable from the Dzintari Concert Hall seaside exit on Turaidas Street and stretches for...

[Learn more...](#)



Rāpina beach

Description: Rāpina beach is located on the shore of Lāmmijārv, next to the Rāpina port...

[Learn more](#) →

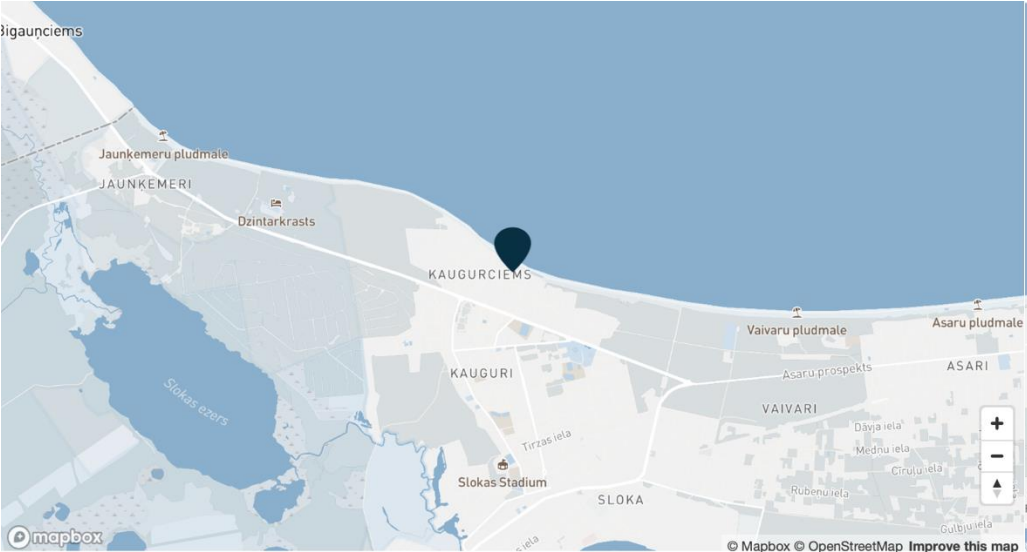


Kauguri Beach

Beach, Accessible, Accessible to parents with baby-strollers, Accessible toilet, Parking lot for handicaps

Print

Object list



Location (1st path):

Draudzības Street

Location (2nd path):

Kapteiņa Zolta Street

Share with others:

We will be happy if you tell others about this article

f

t

s

Accessible from two locations – one boardwalk, the shortest, is located in the end of Draudzības Street – although here is no parking lot and WC accessible to wheelchair users – still the beach can be reached and it might appeal to those who enjoy lazy walks and silence.

The second is the central one, in the end of Kapteiņa Zolta Street, with spacious parking lot, wide concrete path to the waterline, spacious changing cabin and Rescue Station. WC is accessible, yet there is quite a steep ramp – 11 degrees.

Floating wheelchair services are available at the Kauguri beach every day free of charge from 10:00 till 20:00, but should be booked in advance by phone +371 29103212 or e-mail: peldrati@gmail.com.

Accessibility and facilities



riverways.eu website & FB pages

www.riverways.eu | www.upesoga.lv | www.seikleveel.ee



Riverways

544 likes • 546 followers



📷 Edit cover photo

📅 Professional dashboard

✎ Edit

📢 Advertise



- Training of water tourism operators

Activity 2.3, now – 04.26

Key topic - how to serve people with disabilities

1 set of events (1 face-to-face/1 online) +1 training session in the nature with clients in each region (one set of event in EE). Approx 20-25 participants

Easy to use basic training material (i.a. best practice model) shall be jointly worked out by partners

Erasmus+ project MindTour handbook of guidelines for making tourism services more accessible for people with mental impairment

UT: 4180 EUR (training & joint development)

VPR: 3500 EUR (design & joint development) and 2000 EUR (training of operators in Vidzeme)

KPR: 2000 EUR (training of operators in Kurzeme)

RPR: 2000 EUR (training of operators in Riga region)

UT – to coordinate joint work of partners on service design & development of the training concept & training material

- Large-scale & local events autumn 2025 +

PM Meetings

- LP – hosting 2 PMMs
- VPR – hosting 2 PMMs
- RPR – hosting 1 PMM
- SEDMO – hosting 2 PMMs
- GRP – hosting 2 PMMs
- Setomaa – hosting 1 PMM

One done

One done

Done

01.09.24.-31.12.24.

01.05.27.-31.08.27.

Project periods 1-9 (01.09.24.-31.08.27. 36 months)

Activity 3.1 Large scale events

Title

Large scale events

Start period

Period 4, month 13 - 16, 09/01/2025 - 12/31/2025

End period

Period 9, month 33 - 36, 05/01/2027 - 08/31/2027

Description

Participation in 4 large scale watersports and watertourism related promotional events – 3 existing ones (e.g. Vohandu marathon / Gauja XXL / Salacas mauciens/ Bārtas pavasaris), by introducing a new section with participation of disabled persons and other project-related groups (families with kids, seniors etc.), as well as organising 1 new promotional event with Para athletes by promoting the project and social inclusion through a Para sporting event.

At least one event in Latvia and one in Estonia carried out with the support of project funding and at least one event in Latvia and one in Estonia carried out without project funding support.

Sharing stories/photos on soc.media & websites.

Partner(s) involved

LP1 KPR

PP2 RPR

PP3 VPR

PP5 SATT

PP11 Adazi

SATT: 15000 EUR, Ādaži 6000 EUR

Activity 3.4 Local events

Title

Local events

Start period

Period 4, month 13 - 16, 09/01/2025 - 12/31/2025

End period

Period 9, month 33 - 36, 05/01/2027 - 08/31/2027

Description

Transfer of concept "Green&Safe" from LatLit WaterWays project – awareness raising activities for public, involving local community (e.g. river cleaning /kayaking activities with local communities, with the elements of introducing various groups of societies, night kayaking, challenge on surviving in the nature, nature friendly behaviour, safe behaviour on waters). At least 5 events overall in LV and EE together.

Partner(s) involved

PP2 RPR

PP3 VPR

PP6 DKN

PP16 GRP

PP19 Antsla

RPR: 1500, VPR 1500, DKN 1700, GRP 2062,50, Antsla 875 EUR

A photograph of a person in a wheelchair, seen from behind, sitting on a wooden boardwalk. The boardwalk has a wooden railing and leads towards a large body of water under a blue sky with clouds. The person is wearing a grey hoodie and dark pants. The background shows a wide lake or bay with some distant land and a small structure on the water.

Thank you ☺

alise.luse@kurzemesregions.lv

+371 26567874